

Brassmasters Windows



Brassmasters

Images not to scale

Brassmasters range of OO and N scale etched windows are designed to complement the popular Scalescenes.com range of buildings and scratchbuilding materials. Designed in collaboration with Scalescenes.com, this range of etches will enhance the windows and provide additional details to match the photo-realistic card finishes on these card buildings.

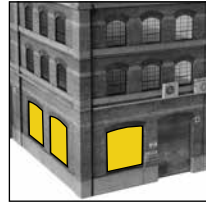
Scalescenes kit usage



A Arched industrial windows

Additional features: Hinged light and tie bar plates
 OO Window opening size: 40mm(h) x 39mm(w)
 N Window opening size: 21mm(h) x 20mm(w)

 **2 windows per pack**



T026a Factory/Warehouse
1 pack for every 2 windows required

Quantity required



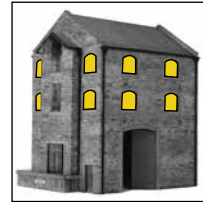
B Small arched industrial windows

Additional features: Hinged light and tie bar plates
 OO Window opening size: 19mm(h) x 20mm(w)
 N Window opening size: 10mm(h) x 10.5mm(w)

 **6 windows per pack**



T005a Low Relief High Street Backs
1 pack for Facade 5



T026c Stone Warehouse/Mill
2 packs required

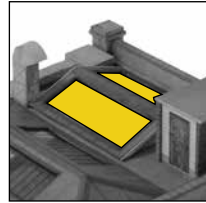
Quantity required



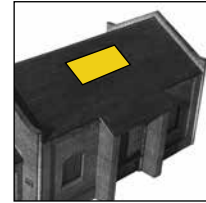
C Large skylights

OO Window opening size: 21mm(h) x 56mm(w)
 N Window opening size: 11mm(h) x 29mm(w)

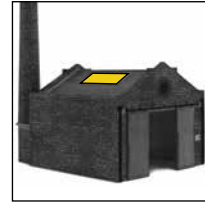
 **2 windows per pack**



T026a Factory/Warehouse
1 pack for each two skylights



R009 Goods Shed
1 pack required



T024b Industrial B - Boilerhouse
1 pack required

Quantity required



D Large sash windows

Additional features: television aerials
 OO Window opening size: 20mm(h) x 14mm(w)
 N Window opening size: 11mm(h) x 7mm(w)

 **6 windows per pack**



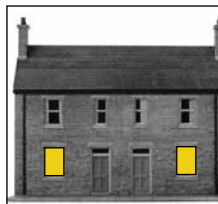
T006c Low Relief Hotel
2 packs required



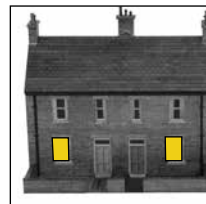
T005 Low Relief High Street
2 packs for Facades 1 and 4



T005a Low Relief High Street Backs
1 pack for Facade 5



T008a Low Relief House Fronts and Shops
1 pack makes x6 houses



T022a Terraced Houses
1 pack makes x6 houses

Quantity required



E Large narrow sash windows

Additional features: Letter boxes and door handles
 OO Window opening size: 20mm(h) x 12mm(w)
 N Window opening size: 11mm(h) x 7mm(w)

 **6 windows per pack**



R003 Small Station Building
1 pack required.



R004 Medium Station Building
2 packs for Modules A & B

Quantity required



F Medium sash windows

Additional features: Letter boxes and door handles
 OO Window opening size: 18mm(h) x 12mm(w)
 N Window opening size: 9.5mm(h) x 6.5mm(w)



6 windows per pack



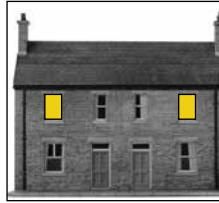
T008 Low Relief House Backs
3 packs for each row



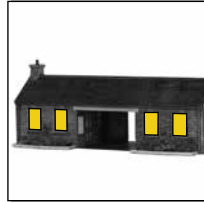
T018a Lock Keepers Cottage
2 packs required



T022c Corner Shops
1 pack required



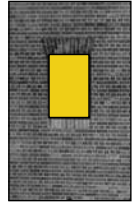
T008a Low Relief House Fronts and Shops
1 pack makes x6 houses



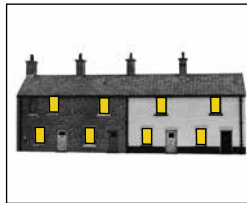
R003b GWR Station and Goods Shed
1 pack required



T022a Terraced Houses
2 packs makes x1 two house section
3 packs makes x1 four house row



Scratchbuilder's yard brick sheets (Arch N)



T019 Row of Cottages
2 packs required



T005 Low Relief High Street
3 packs for Facades 1 and 2



T005a Low Relief High Street Backs
2 packs for Facades 1 and 4

Quantity required

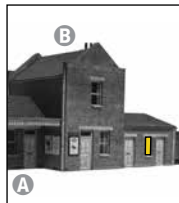


G Small sash windows

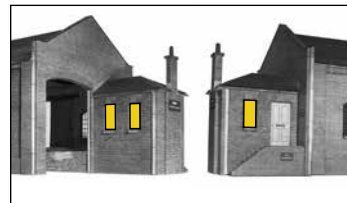
Additional features: Letter boxes, door handles and skylights
 OO Window opening size: 18mm(h) x 9mm(w)
 N Window opening size: 9.5mm(h) x 4.5mm(w)



6 windows per pack



R004 Medium Station Building
1 pack for Module C



R009 Goods Shed
1 pack required



T018a Lock Keepers Cottage
1 pack required



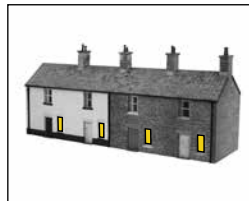
T008 Low Relief House Backs
2 packs for each row



T005a Low Relief High Street Backs
1 pack for Facade 2



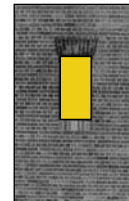
T008a Low Relief House Fronts and Shops
1 pack makes x6 houses



T019 Row of Cottages
1 pack required



T022a Terraced Houses
1 pack makes x1 two house section
2 packs makes x1 four house row



Scratchbuilder's yard brick sheets (Arch O)

Quantity required



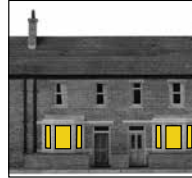
H Bay windows

OO Window opening sizes:
Centre: 19mm(h) x 13mm(w)
Side: 19mm(h) x 8mm(w)
N Window opening sizes:
Centre: 10mm(h) x 6.5mm(w)
Side: 10mm(h) x 4mm(w)

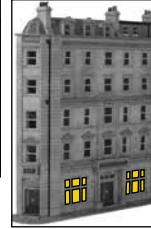
4 windows per pack



T022a Terraced Houses
1 pack makes x1 four house row



T008a Low Relief House Fronts and Shops
1 pack makes four houses



T006c Low Relief Hotel
1 pack required (used flat rather than in bay configuration)



T036 School
1 pack required (used flat rather than in bay configuration)

Quantity required



I Old-style shop windows and doors



J Modern-style shop windows and doors

OO Window opening sizes: 23mm(h) x 31mm(w)
OO Door opening sizes: Double: 33mm(h) x 17mm(w)
Single: 33mm(h) x 14mm(w)
N Window opening sizes: 12.5mm(h) x 16mm(w)
N Door opening sizes: Double: 17.5mm(h) x 9mm(w)
Single: 17.5mm(h) x 7.5mm(w)

2 windows, 1 single door and 1 double door per pack



T022c Corner Shops
1 pack makes one Shopfront 1 or two Shopfronts 2



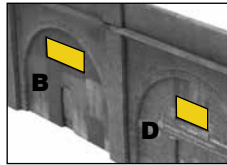
R020 Shops Under Arches
1 pack makes x2 shopfronts

Quantity required

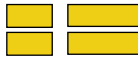


K Industrial windows

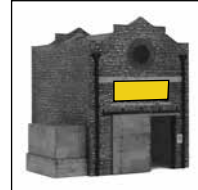
Additional features:
Barrel bolts with padlocks
OO Window opening sizes:
Large: 17mm(h) x 47mm(w)
Small: 17mm(h) x 32mm(w)
N Window opening sizes:
Large: 9mm(h) x 24mm(w)
Small: 9mm(h) x 16.5mm(w)



R019 Workshops Under Arches
1 pack makes x2 Infills B and x2 Infills D



4 windows per pack



T024a Industrial A - Warehouse
T024c Industrial C - Workshop
1 pack required

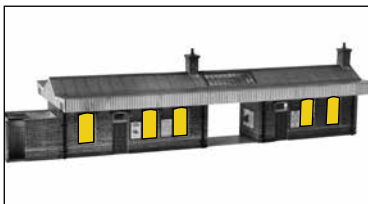
Quantity required



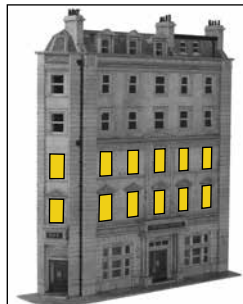
L Large sash windows (eight small panes)

OO Window opening sizes: 24mm(h) x 14mm(w)
N Window opening sizes: 12.5mm(h) x 7.5mm(w)

3 windows per pack



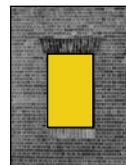
R004a Island Platform Building
4 packs required



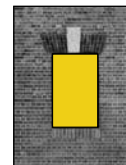
T006c Low Relief Hotel
4 packs required



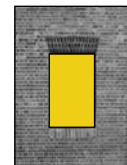
T005 Low Relief High Street
2 packs for Facade 5



(Arch K)

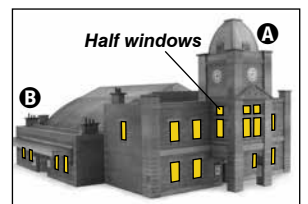


(Arch L)



(Arch M)

Scratchbuilder's yard brick sheets



R005 Large Station Building
7 packs for Module A
2 packs for Module B
9 packs for Modules A & B

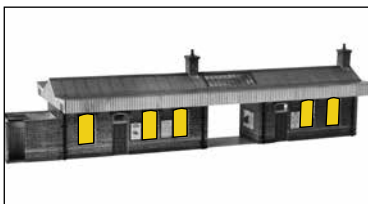
Quantity required



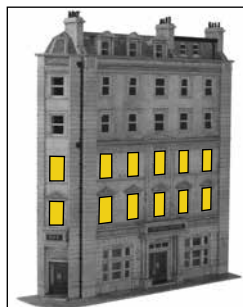
M Large sash windows (four large panes)

OO Window opening sizes: 24mm(h) x 14mm(w)
N Window opening sizes: 12.5mm(h) x 7.5mm(w)

3 windows per pack



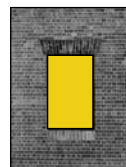
R004a Island Platform Building
4 packs required



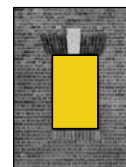
T006c Low Relief Hotel
4 packs required



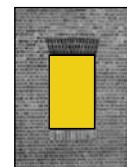
T005 Low Relief High Street
2 packs for Facade 5



(Arch K)

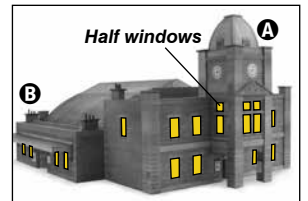


(Arch L)



(Arch M)

Scratchbuilder's yard brick sheets



R005 Large Station Building
7 packs for Module A
2 packs for Module B
9 packs for Modules A & B

Quantity required

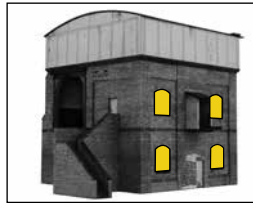


N Ornate arched windows

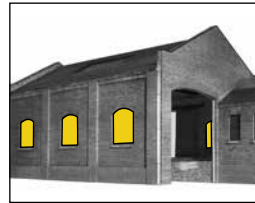
Additional features: hinged light
 OO Window opening sizes: 24mm(h) x 20mm(w)
 N Window opening sizes: 12.5mm(h) x 10mm(w)



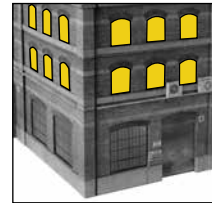
4 windows per pack



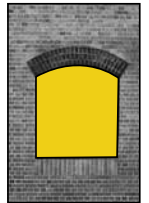
R026 Coaling Stage
1 pack required



R009 Goods Shed
2 packs required



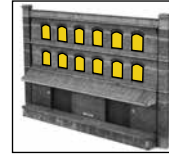
T026a Factory/Warehouse
3 packs make two wall sections



Arch H, I, and J
Scratchbuilder's yard brick sheets

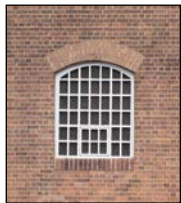


T036 School
1 pack required



T027 Low Relief Factory
3 packs required

Quantity required

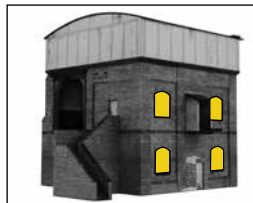


O Arched industrial windows

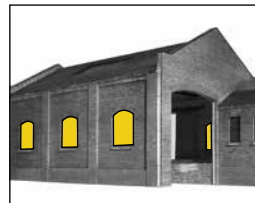
Additional features: hinged light
 OO Window opening sizes: 24mm(h) x 20mm(w)
 N Window opening sizes: 12.5mm(h) x 10mm(w)



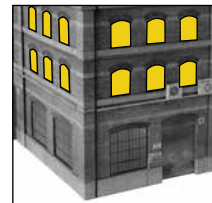
4 windows per pack



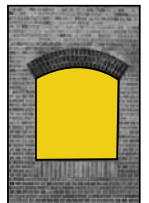
R026 Coaling Stage
1 pack required



R009 Goods Shed
2 packs required



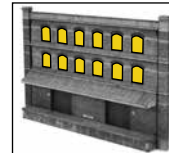
T026a Factory/Warehouse
3 packs make two wall sections



Arch H, I, and J
Scratchbuilder's yard brick sheets

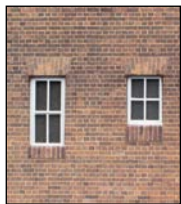


T036 School
1 pack required



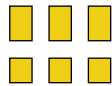
T027 Low Relief Factory
3 packs required

Quantity required



P Three sash and three simple windows

OO Window opening sizes: 18mm(h) x 10mm(w)
 N Window opening sizes: 9.5mm(h) x 5mm(w)
 OO Window opening sizes: 13mm(h) x 10mm(w)
 N Window opening sizes: 6.5mm(h) x 5mm(w)



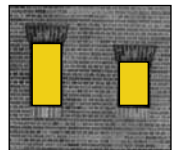
6 windows per pack



T006c Low Relief Hotel
1 pack required



T005 Low Relief High Street
3 packs for Facade 4 and 5



Scratchbuilder's yard brick sheets (Arch O)

Quantity required

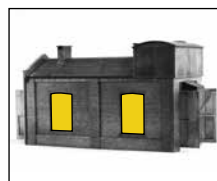


Q Engine shed windows

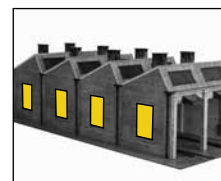
Additional features: hinged light
 OO Window opening sizes: 43mm(h) x 29mm(w)
 N Window opening sizes: 22mm(h) x 15.5mm(w)



4 windows per pack



R021a Small Engine Shed
1 pack makes two walls

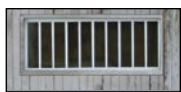


R021b North Light Engine Shed
1 pack for each two wall section



R022b Gable Roof Engine Shed
1 pack for each two wall section

Quantity required

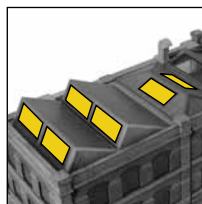


R Engine shed roof lights

OO Window opening sizes: 16mm(h) x 44mm(w)
 N Window opening sizes: 9.5mm(h) x 23mm(w)



4 windows per pack



T026a Factory/Warehouse
1 pack for each four skylights

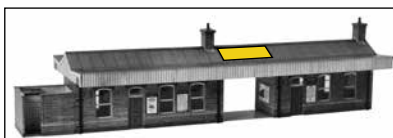


R021b North Light Engine Shed
1 pack for each four skylights



R022b Gable Roof Engine Shed
1 pack for each four skylights

R004a Island Platform Building
1 pack required



Quantity required

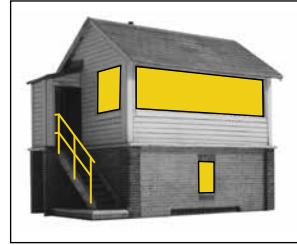


S Signalbox windows

Additional features:
Handrails and Lever frame
OO Window opening sizes:
17mm(h) x 18.5mm(w)
17mm(h) x 71mm(w)
17mm(h) x 36mm(w)
13mm(h) x 9.5mm(w)

1 set per pack

N Window opening sizes:
9mm(h) x 9.5mm(w)
9mm(h) x 37mm(w)
9mm(h) x 18.5mm(w)
6.5mm(h) x 4.5mm(w)



R010 Signalbox
1 pack for each kit

Quantity required



U Access ladders

Additional features:
Top handrails, support brackets and chequer-plate.
OO sizes:
160mm(h) x 5.5mm(w)

2 ladders per pack



R025a Water Tower
1 pack for each kit (only 1 ladder required)



R021a Small Engine Shed
1 pack for each kit (only 1 ladder required)



R026 Coaling Stage
1 pack for each kit (only 1 ladder required)

Quantity required



V Safety cages to fit Access ladders U

OO sizes:
130mm(h) x 10mm (dia. approx.)

1 safety cage per pack
PLEASE NOTE: Does not include ladder - see pack U above



T009 Modern Industrial Building
As required



T015 Storage Tanks
As required



T032 Gantry Crane
1 pack (plus Access Ladder pack U)

Quantity required

T Safety cages and Access ladders (N scale version only)

Additional features:
Top handrails and support brackets.
82mm(h) x 3mm(w) LONG
25mm(h) x 3mm(w) SHORT

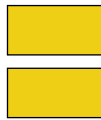
4 SHORT ladders per pack
2 LONG ladders per pack
2 safety cages per pack

Quantity required

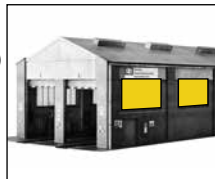


W Diesel depot windows

OO Window opening sizes: 31mm(h) x 61mm(w)
N Window opening sizes: 16mm(h) x 31mm(w)



2 windows per pack



R023a Diesel Depot
1 pack makes one two window wall section

Quantity required



X Small semi circular windows

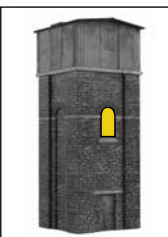
OO Window opening sizes: 24mm(h) x 14mm(w)
N Window opening sizes: 12mm(h) x 7mm(w)



3 windows per pack



R025a Water Tower
1 pack required



T024d Industrial D – Water Tower
1 pack required



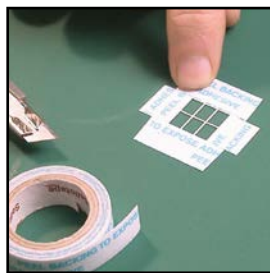
Scratchbuilder's yard brick sheets (Arch G)

Quantity required

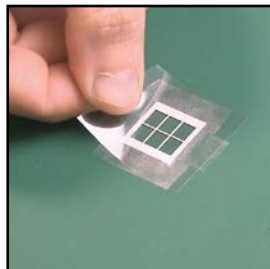
Installation guide

- Modelling knife or scalpel [With a sharp blade!]
- Thin double sided tape
- Thin clear film or acetate [OHP film or packaging windows]
- Steel ruler
- Jewellers snips or scissors

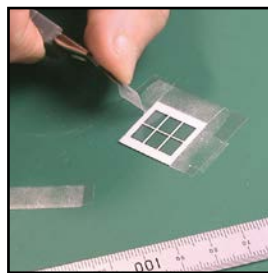
Spray paint the windows (both sides if visible on the finished model) on the fret. White aerosol model primer works well.



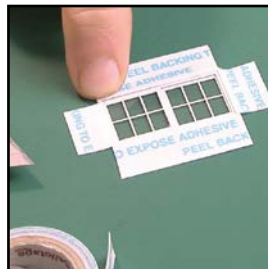
Place the window **front side down** and apply strips of double sided tape around the outside edges.



Remove the tape backing strip and carefully position a suitable piece of clear film over the window.



With a sharp blade carefully cut away the excess film and double sided tape.



Test fit the window into building. Place the window **front side up** and apply strips of double sided tape around the outside edges. Trim away the excess tape.

Position the window into structure.

Assembly tip → Test fit and trim the hinged lights if required. A clear glazing adhesive such as 'Glue N Glaze' can be used to position these panels.

To model the hinged lights open saw a diagonal cut in the edge of a piece of MDF with a piecing saw to hold the hinged section. This allows you hold the section steady and position the main window without burning your fingers.

Scalescenes kit

Brassmasters code

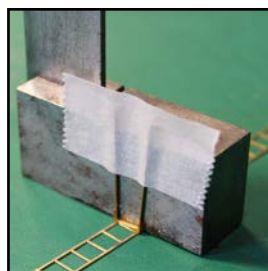
R003	Small Station Building	E
R003b	GWR Station and Goods Shed	F
R004	Medium Station Building	E G
R005	Large Station Building	L M
R009	Goods Shed	C G N O
R010	Signalbox	S
R019	Workshops Under Arches	K
R020	Shops Under Arches	I J
R021	North Light Engine Shed	Q R
R021a	Small Engine Shed	Q U
R022	Gable Roof Engine Shed	Q R
R023a	Diesel Depot	W
R025a	Water Tower	U X
R026	Coaling Stage	N O U
T005	Low Relief High Street	D F L M P
T005a	Low Relief High Street Backs	F G D B
T006c	Low Relief Hotel	D H L M P
T009	Modern Industrial Building	U V
T008	Low Relief House Backs	F G
T008a	Low Relief House Fronts & Shops	D F G H
T015	Storage Tanks	U V
T018	Lock Keepers Cottage	F G
T019	Row of Cottages	F G
T022a	Terraced Houses	D F G H
T022c	Corner Shops	D E F I J
T024a	Industrial A - Warehouse	K
T024b	Industrial B - Boilerhouse	C
T024c	Industrial C - Workshop	K
T024d	Industrial D - Water Tower	U X
T026a	Factory/Warehouse	A N O C R
T026c	Stone Warehouse/Mill	B
T027	Low Relief Factory	N O
T032	Gantry Crane	U V
T036	School	H N O
Scratchbuilder's yard brick sheet (Arch G)	X	
Scratchbuilder's yard brick sheet (Arch H)	N O	
Scratchbuilder's yard brick sheet (Arch I)	N O	
Scratchbuilder's yard brick sheet (Arch J)	N O	
Scratchbuilder's yard brick sheet (Arch K)	L M	
Scratchbuilder's yard brick sheet (Arch L)	L M	
Scratchbuilder's yard brick sheet (Arch M)	L M	
Scratchbuilder's yard brick sheet (Arch N)	F	
Scratchbuilder's yard brick sheet (Arch O)	G	



Ensure that you don't apply the tape too far toward the centre of the windows otherwise it may be visible when the windows are in place.

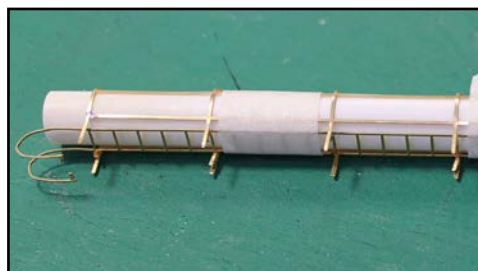


A free 'grime-covered' window sheet designed to be printed on to inkjet or laser compatible film and placed behind the etched industrial windows is available here: www.scalescenes.com/scratchbuilders-yard



Adding the support brackets to the Access Ladders

To hold the support brackets in place whilst soldering or gluing, lightly tape to the side of an small engineers square or block.



Adding the Safety Cage to the Access Ladders

Gently curve the cage around a length of 10mm diameter rod or tube. (approx. 5mm in N scale).

Lightly tape the ladder into position during soldering or gluing.

ORDER FORM ON NEXT PAGE →

Brassmasters Windows



Order form

Name _____

Address _____

Phone _____

Email _____

Item	Please tick scale: <input type="checkbox"/> OO <input type="checkbox"/> N	Quantity	Sub-total
A Two large arched industrial windows	OO £5.00 N £1.50		
B Six small arched industrial windows	OO £5.00 N £1.50		
C Two large skylights	OO £4.50 N £1.25		
D Six large sash windows	OO £5.00 N £1.50		
E Six large narrow sash windows	OO £5.00 N £1.50		
F Six medium sash windows	OO £5.00 N £1.50		
G Six small sash windows	OO £5.00 N £1.50		
H Two bay windows	OO £5.00 N £1.50		
I Old-style shop windows and doors	OO £5.00 N £1.50		
J Modern-style shop windows and doors	OO £5.00 N £1.50		
K Four industrial windows	OO £5.00 N £1.50		
L Three large sash windows (eight small panes)	OO £4.50 N £1.25		
M Three large sash windows (four large panes)	OO £4.50 N £1.25		
N Four ornate arched windows	OO £5.00 N £1.50		
O Four arched industrial windows	OO £5.00 N £1.50		
P Three sash and three simple windows	OO £4.50 N £1.25		
Q Four engine shed windows	OO £7.50 N £2.50		
R Four engine shed roof lights	OO £7.50 N £2.50		
S Signalbox windows, handrails and levers	OO £9.00 N £3.00		
T N scale Access Ladders and Safety Cages	N/A N £4.00		
U Access Ladders	OO £6.00 N/A		
V Safety Cages to fit Access Ladders	OO £5.00 N/A		
W Diesel Depot windows	OO £7.00 N £3.00		
X Small Semi Circular windows	OO £4.00 N £1.25		

Sub-total

Postage

Total

Availability

All products are available direct by mail order or from our stand at selected exhibitions.

Payment

Cash, postal order or cheque with order. Unfortunately, we are unable to accept credit cards or foreign currency or non-Sterling cheques.

Please make your postal orders/cheques payable to BRASSMASTERS.

For overseas customers only we can make special arrangements to take payment via Paypal—please email us to discuss.

Minimum £10 order (excluding P&P).

Delivery

Whilst every effort will be made to supply ex-stock, we will notify you if we cannot deliver your order within twenty-eight days. Please bear in mind that this is a part-time hobby business for us and that we only collect our post once each week. We also have to wait up to 14 days to ensure cheques are cleared and that this is notified to us. Therefore, on some occasions, there may be a delay of 3/4 weeks between your letter, the cashing of your cheque and the despatch of your order. For those with email please quote your email address when you order and we will advise you on its progress at each stage.

Postage and packing

Orders up to £20 add £3.00

Orders from £20 up to £45 add £4.00

Orders over £45 up to £95 add £6.00

Orders over £95 up to £150 add £10.00

Orders over £150 up to £300 add £12.00

Overseas customers please email us for a price

Faulty goods and shortages

We aim to despatch goods in perfect condition but occasionally a sub-standard item may slip through our quality control system. If you receive goods which are deficient in this way please return the faulty item or detail the shortage together with proof of purchase. We will replace the item and refund your postage provided you notify us within 30 days of purchase.

Prices and specification

We aim to maintain prices between each issue of our catalogue but occasionally our suppliers may increase the prices charged to us. We reserve the right to amend any of our prices at the date of despatch. We also reserve the right to amend the specification of our products at any time.

VAT

We are not registered for VAT and therefore all prices are net of VAT. Overseas customers will not therefore be able to reclaim VAT.

Please send order form and payment to:

Brassmasters
PO Box 1137
Sutton Coldfield
West Midlands B76 1FU

Enquires:

sales@brassmasters.co.uk



Brassmasters

www.brassmasters.co.uk

www.scalescenes.com

© scalescenes.com & Brassmasters 2018